

ECOMSMART

MULTI-PARAMETER SMART AMBIENT AIR MONITOR



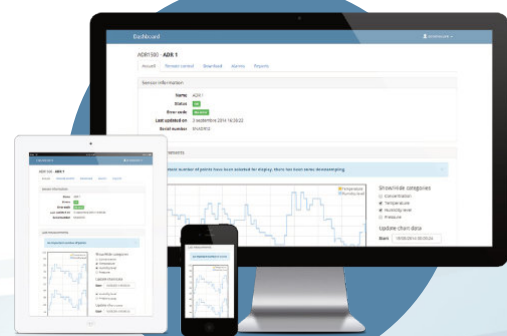
Ideal for monitoring air quality in ambient or harsh environments, ECOMSMART tracks pollutants such as NO₂, O₃, CO, NO, SO₂, H₂S, VOC, CO, PM_{1/2.5/4/10} (and others) and temperature, pressure and humidity.

Easy to install, ECOMSMART automatically connects to the environmental data web platform <https://i-comesure.com> for real-time data monitoring and sensors remote control.

Ethernet, 3G/4G,
Wi-Fi, LoRa,
LTE-M, Zigbee



Secure web server
i-comesure.com



+ BENEFITS

- + All-in-one multi-parameter system
- + Controlled calibration process for quality measurement
- + Easy to install and use
- + Centralized services on i-comesure.com
- + Stand-alone version (solar panel & battery)

+ APPLICATIONS

- + Urban centres, Smart cities
- + Industrial sites (quarries, mines, airports, ports)
- + Workshops, warehouses, work-sites
- + Roads, tunnels, subway

ECOMSMART

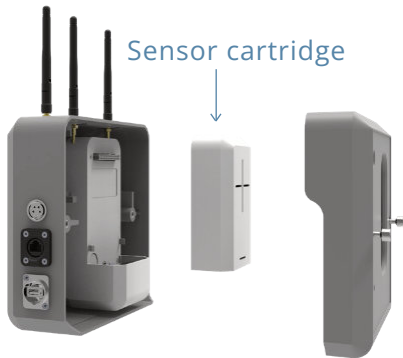
TECHNICAL SPECIFICATION



Dimensions/Weight	L8.2" x W7.8" x H3.5" (L210 x W200 x H90 mm) / 4.41 lbs (2 kg)		
Connectivity	Ethernet Options: Wi-Fi - 3G/4G/GPRS - LTE-M - LoRa - ZigBee Pro		
Frequency	One measurement every 60 seconds (ajustable from 10s to 1h)		
Digital I/O	1 Digital Input / 1 Digital Output		
Localization	Accelerometer, GPS		
Access to data	https://i-comesure.com		
Web services	Mapping Multi-data display Device status Device remote control Data storage Data download Configurable alerts/alarms Data analytics reports Virtual Integrated Devices (VID) Data ciphering API Database export Data logger		
Data security	Local + Cloud-based encryption WPA2-Enterprise compatible		
Data storage	Built-in microSD memory card Web storage		
Power supply	5 VDC USB, 2 A max. Adapter included: 100-240VAC 50/60 Hz IP67 power supply Built-in battery backup (8h of use, 12h in LoRa) optional		
"Autonomy kit" option	Solar panel (55 W, 90 W, 115 W); Battery weather-resistant assembly		
External fastening	Clamped onto a post or a fence, weather-resistant (equivalent IP54)		
Certifications	CE Class B, FCC Class A		
Patent	Applicable in France, Europe, United States		
Sensors	Technology	Measurement Range	Detection Limit
NO ₂	Electrochemical	0-20 ppm	< 0.02 ppm
O ₃		0-20 ppm	< 0.02 ppm
CO		0-500 ppm	< 0.02 ppm
NO		0-20 ppm	< 0.08 ppm
SO ₂		0-50 ppm	< 0.02 ppm
H ₂ S		0-50 ppm	< 0.01 ppm
NH ₃		0-100 ppm	< 3 ppm
CH ₂ O		0-10 ppm	< 0.1 ppm
Cl ₂		0-20 ppm	< 0.2 ppm
HCl		0-20 ppm	< 0.5 ppm
VOC ₅₀ and VOC ₃₀₀₀	PID	0-50 ppm 0-3000 ppm	1 ppb 50 ppb
CH ₄	NDIR	0-2.5%	500 ppm
CO ₂		0-5000 ppm	1 ppm
PM ₁ , PM _{2.5} , PM ₄ , PM ₁₀	Laser/Optical	0-1000 µg/m ³	1 µg/m ³
Total Suspended Particles (TSP)		0-2000 µg/m ³	1 µg/m ³
Environmental parameters	Technology	Measurement Range	Accuracy
Temperature	Temperature sensor	- 4 to 122 °F (-20 to +50 °C)	0.54 °F (0.3 °C)
Humidity	RH sensor	0 to 100% HR	3% HR
Pressure	Pressure sensor	300 to 1100 hPa	1 hPa

MEASUREMENT SPECIFICATIONS

Select the sensors of your choice: up to 3 electrochemical, 1 PID, 1 NDIR and 1 optical sensors.



Optimized maintenance and calibration: one-step sensor cartridge annual replacement.

