

DIRECTSENSE® TOX

Toxic Gas Test Meters



GRAYWOLF®
SENSING SOLUTIONS



Advanced Environmental Instrumentation Harnessing the Power of Mobile Computing



✓ Surveyed

✓ Documented

✓ Reported

Realtime

File	Log	Probe	View
Hydrogen Chloride		0.2 ppm	
Chlorine		0.64 ppm	
Oxygen		20.8 %	
Sulfur Dioxide		0.1 ppm	
Hydrogen		0 ppm	
Temperature		24.4 °C	

Attached Audio Note

Probe Calibration Info

Attached Photo(s)

Attached Text Note

Live: Fabrication Floor

Menu Snap

Example Screens

Click the SNAP icon to record measurements, time, date and detailed location name

Log at intervals of your choice. Display real-time trend graphs on handheld and/or remote devices.

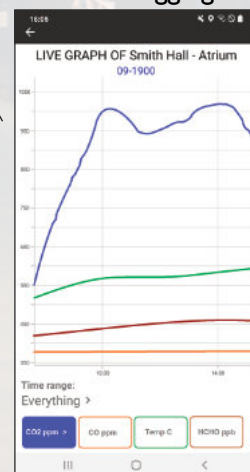
Snap-Shot Log

File	Log	Probe	View
Ozone		0.54 mg/m3	
Ammonia		1.3 mg/m3	
Sulfur Dioxide		1.3 mg/m3	
Nitric Oxide		2.0 mg/m3	
Hydrogen Sulfide		0.15 mg/m3	
Temperature		22.9 °C	
Barometric		754.2 mmHg	

Menu Snap

Snap Shot log to 'Lab 4'

Trend Logging



On-Board Docs



GrayWolf is transforming how to Measure, Data-log and Document worker exposure levels and indoor air quality parameters.
The DirectSense TOX probes, connecting to your choice of platforms, are powerful environmental data collection tools; intuitive and Easy-To-Use.

- Choose from SO₂, NO₂, NO, CO, H₂S, HCN, EtO, Cl₂, O₂, O₃, NH₃, HCl, H₂, SiH₄, AsH₃, PH₃, PID (TVOCs) ...and more
- Up to 6 gas sensors (plus TRH) per probe
- Connect multiple probes simultaneously
- "Snap-Shot" instantaneous data capture and long-term data trending
- On-board measurement tips, industry guidelines and help files
- Remotely access readings, log to the cloud via secure Microsoft Azure servers with optional GrayWolfLive™
- Password protect access or other high-security options available
- Stores measured data along with calibration history, associated photos, videos, text notes, audio notes ...and more
- OEM option for alternative data connection

Choose Your Platform:

AdvancedSense®
Purpose-built GrayWolf Meters



GrayWolf Supplied Windows Tablets



Apple iOS and Android Devices
(use your own or GrayWolf supplied)



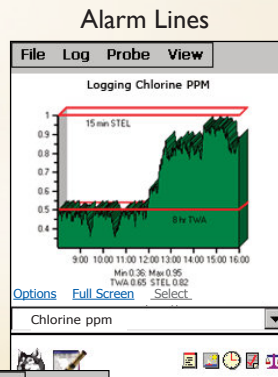
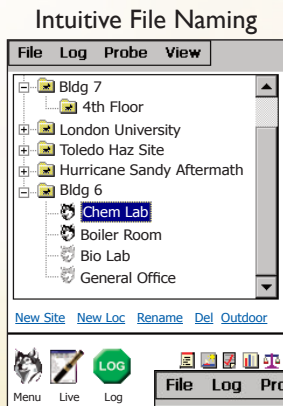
GrayWolfLive™ Cloud App



Or use your device as the instrument platform
Remote Data Access to, and email/text
alerts from, any WiFi enabled platforms
via optional **GrayWolfLive**

Advanced Toxic Gas Measurement

Example Screens

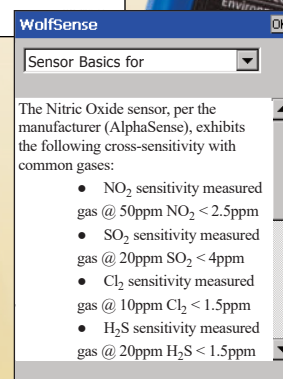


Realtime (multi-probe)

Parameter	Reading
Hydrogen Fluoride	0.0 ppm
Fluorine	0.58 ppm
Phosphine	0.00 ppm
Chlorine Dioxide	1.00 ppm
Phosgene	0.81 ppm
Temperature	72.4 °F
Arsine	0.34 ppm
Hydrogen Cyanide	1.3 ppm

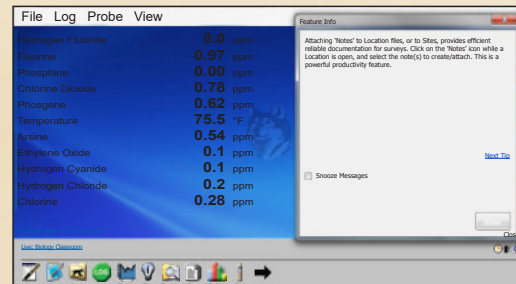
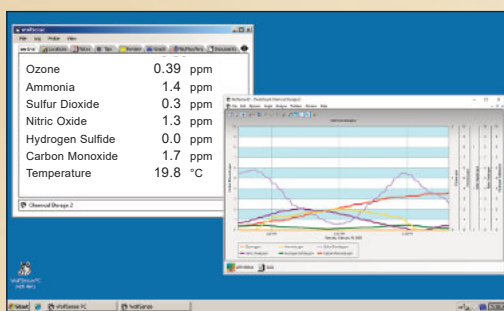
Navigation: << Back Next >> Auto Scroll

Icons: Live, Notes, Log, Locs, Graph, Review



Documenting and data-logging gas parameters has never been easier. Provide a descriptive name for files using the virtual keyboard. Record your readings as snap-shot data captures, or as trend logs over time. On-board educational info. Efficiently attach notes, in-situ (or after-the-fact) direct to data files:

- Photos
- Videos
- Infrared Images
- Audio
- Text
- Events (time-tagged text)



GrayWolf manufactured meters, WIN tablets, and Android devices that are ideal for the application are available from GrayWolf; or connect probes to your own device.

GrayWolf's TOX kits come with WolfSense® PC software for data transfer, analysis, graph/report generation and/or simple export to Excel.

✓ Display

✓ Notate

✓ Data Log

✓ Organize

✓ Report

- Easy to calibrate all parameters
- Calibration history stored on smart sensor
- Select up to 6 gas sensors in one probe (plus %RH and °F/°C)
- Plus %RH Temperature



DSII-8

Display units as:

- ppb
- $\mu\text{g}/\text{m}^3$
- ppm
- mg/m^3

(mass concentration readings are auto-compensated w/optional barometric pressure sensor)

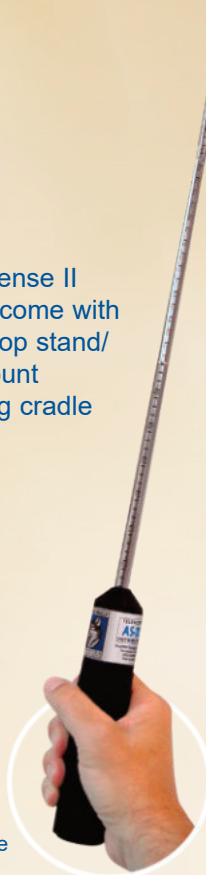
VOCs (PID) plus 5 specific gases, %RH, and temperature



DirectSense II probes come with bench-top stand/ wall-mount charging cradle

AS-201/202A

Air Velocity Probe (connects via cable to AdvancedSense or WIN tablets)



Toxic exposure and/or IAQ applications with the appropriate sensors.

Sensors are true plug-and-play, and may be swapped on-site.

- | | |
|---|----------------------------------|
| • Sulfur Dioxide (SO_2) | • Ozone (O_3) |
| • Nitrogen Dioxide (NO_2) | • Oxygen (O_2) |
| • Nitric Oxide (NO) | • Ammonia (NH_3) |
| • Carbon Monoxide (CO) | • Chlorine (Cl_2) |
| • Hydrogen Sulfide (H_2S) | • Hydrogen (H_2) |
| • Hydrogen Cyanide (HCN) | • Fluorine (F_2) |
| • Hydrogen Chloride (HCl) | • Formaldehyde (HCHO) |
| • Hydrogen Fluoride (HF) | • Phosphine (PH_3) |
| • Ethylene Oxide ($\text{C}_2\text{H}_4\text{O}$) | • Arsine (AsH_3) |
| • Chlorine Dioxide (ClO_2) | • Silane (SiH_4) |
| • Carbon Dioxide (CO_2) | • Phosgene (COCl_2) |
| • Diborane (B_2H_6) | • PID (TVOCs) |



ZEPHYR-LDP
Differential Pressure Module
(option for barometric)

Interface these meters to GrayWolf platforms; and/or use as stand-alones



PC-3016A

6-Channel Particle Meter (optional WolfRadio™ XM to transmit data directly to the cloud, iOS or Android)



PM-601

Particulate Concentration

DIRECTSENSE[®] TOX

Toxic Gas Test Meters



SPECIFICATIONS: DirectSense II

GAS		Resolution (ppm)	Detection (ppm)
Ammonia (NH ₃) Standard range sensor		0.0 to 100.0	<1.0
Ammonia (NH ₃) High range sensor		0 to 1000	<5
Carbon Monoxide (CO) Standard range sensor		0.0 to 500	0.1
Carbon Monoxide (CO) High range sensor		0.0 to 5000	1
Chlorine (Cl ₂)		0.00 to 20.00	<0.02
Hydrogen (H ₂)		0 to 1000	<2
Hydrogen Chloride (HCl)		0.0 to 20.0	<0.2
Hydrogen Cyanide (HCN)		0.0 to 100.0	<0.05
Hydrogen Sulfide (H ₂ S)		0.00 to 50.00	<0.03
Formaldehyde (HCHO)	(Inquire about higher range) standard range:	0.00 to 1.00	<0.02
Nitric Oxide (NO)		0.0 to 250.0	<0.2
Nitrogen Dioxide (NO ₂)		0.00 to 20.00	<0.02
Oxygen (O ₂)		0.0 to 25.0%	0.2%
Ozone (O ₃)		0.00 to 1.00	<0.02
Sulfur Dioxide (SO ₂)		0.0 to 50.0	<0.1
Arsine (AsH ₃)		0.00 to 1.00	<0.03
Chlorine Dioxide (ClO ₂)		0.00 to 1.00	<0.03
Diborane (B ₂ H ₆)		0.00 to 1.00	<0.03
Ethylene Oxide (C ₂ H ₄ O)		0.0 to 100.0	<0.1
Fluorine (F ₂)		0.00 to 1.00	<0.02
Hydrogen Fluoride (HF)		0.00 to 10.00	<2
Phosgene (COCl ₂)		0.00 to 1.00	<0.02
Phosphine (PH ₃)		0.0 to 10.0	<0.1
Silane (SiH ₄)		0.00 to 50.00	<0.1
Carbon Dioxide (NDIR CO ₂)		0 to 6,000 10,000 or 20,000	1
TVOC (PID)	4 ranges from low ppb to 10,000ppm, suitable for varied IAQ, mfg, and toxic gas exposure applications. Contact GrayWolf for specifications.		
Temperature: (PT100)		Accuracy: ±0.3°C Range: -10.0° to 160.0°F (-25.0° to +70.0°C)	
Relative Humidity (capacitive)		Accuracy +/- 2%RH 0 to 80%RH, +/-3%RH >80 to 100%RH	
Operating Range:		0 to 98%RH (non-condensing), -20° to 50°C	
Specific gas sensors may have a reduced operating range			
Probe Dimensions (DSII):		3.3" (83mm) W x 2.2" (55mm) H x 11.6" (295mm) L	
Weight (probe):		without sensors 1lb (0.46kg)	
Power (probe):		6600mAh Li-Ion rechargeable Typical battery life 9 hours to 36+ hours dependent on sensor mix	
Meter/Tablet/Smartphone battery life varies by make and model			
Typical sensor life, sensor drift and response times vary by sensor			

URCE HKE CVIQUPTGUMDLCE VVQ EJ CPI GY IJQ QW HWTVJ GT PQVIEG

- Automated reporting software, and many other accessories are available from GrayWolf. View them on our website at graywolvesensing.com/accessories/

✓ Ogcuwtg Uo ctv

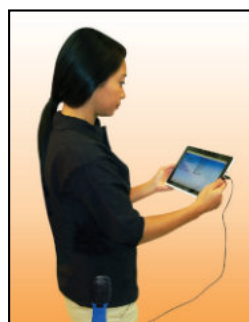
✓ Tgr qtv Ghhkekgpvrñ



◀ **PCC-25**
Dual-Probe
Security Case



PCC22-API ▶
Hardshell Case



CA-HD4-A1 ▶
Calibration Cap



▲ **ACC-BELTCL-2** or **ACC-BELTCL-3** beltclips for convenient walk-thru measurements or personal protection monitoring.



▲ **CA-GSXX**
Gas Calibration Kits. Specific calibration gases are available in various portable cylinder sizes



▲ **PCC-07T**
Nylon carrying case for ACC-TPDI tripod, mounting hardware, and added accessories

▶ **ACC-TPD-I**
Tripod (with optional mounting hardware)



DirectSense TOX kits are available that include the platforms of your choice. These complete kits also come with WolfSense PC desktop data transfer software, hardshell case, required accessories and much more. Contact GrayWolf for details.

GRAYWOLF
SENSING SOLUTIONS

6 Research Drive (Worldwide Headquarters)
Shelton, CT 06484 USA



Email: info@xearpro.com

www.xearpro.com

Rivenditore:

XEARPRO

Via delle Primule, 16, Cogliate (MB)
20815, Italia
Tel. (+39) 02 9646.0317