



✔ Surveyed

✔ Documented

✔ Reported

*Features:*

- View / Log 6 Particle Sizes Simultaneously
- 0.3 to 0.5µm, 0.5 to 1.0µm, 1.0 to 2.5µm, 2.5 to 5.0µm, 5.0 to 10.0µm, 25+ µm
- View / Log as differential or cumulative
- Alternatively display µg/m<sup>3</sup> in Concentration Mode including approximate PM2.5, PM10, TSP
- 0.1 CFM (2.8 LPM) Flow Rate
- Bright Color Touch Screen Interface
- Removable / Rechargeable Li-Ion Battery
- Optional Temperature / Relative Humidity Probe
- Internal Audible Alarm
- 2-Year Limited Warranty
- Belt clip for walk-thru surveys or attachment to tripod or to GrayWolf Cases/Area Monitors
- On-board Memory (stores 3,000 samples)
- Supplied with GrayWolf's WolfSense® PC Software for data download and analysis
- Optional WolfSense ARG Automated Report Generation Software
- Use as a stand-alone or interface to GrayWolf's DirectSense®, WolfPack® and AdvancedSense® for Enhanced Logging and Expanded Features



*Benefits:*

- Easy to Use (User-Friendly Interface)
- Expands your GrayWolf AdvancedSense, DirectSense and WolfPack parameters
- Low Cost of Ownership
- Efficiently Combines Particle Counting and Mass Concentration read-out in one Meter

**Use the PC-3016A as a stand-alone particle meter, plug it into a mobile computer or into a sophisticated AdvancedSense/WolfPack system for simultaneous connection with GrayWolf's DirectSense probes.**

- Ergonomically designed and lightweight, the PC-3016A is tried-and-true, offered by GrayWolf (and improved upon) since 2007.
- Easily download data from the PC-3016A using the included WolfSense PC Software to create high quality trend/bar graphs/tables, use WolfSense's advanced organizational features or simply export to Microsoft Excel®.
- Optionally add Advanced Report Generator software for extremely efficient, automated reporting of particle count/concentration data.
- Offering 6 channels of simultaneous particle counting, the PC-3016A displays both cumulative and differential particle count data on its easy-to-read 3.5" (8.9 cm) color touch screen.
- Display/Log readings in particle counts and/or calculated mass concentration (µg/m<sup>3</sup>), including PM1.0, PM2.5, PM10, TSP and more.
- Monitor particulate levels, even in those "hard-to-reach" areas where two-handed operation is unsafe.



# PC-3016A

6-Channel Particle Counter





# PC-3016A

## 6-channel Particle Counter

### Specifications: PC-3016A

- Size Range:** 0.3 - 25.0 µm+ (145 µm max into inlet)
- Channel Sizes:** 0.3, 0.5, 1.0, 2.5, 5.0, 10.0 µm
- Optional: inquire about other size cuts (Particle Count only)
- Flow Rate:** 0.1 CFM (2.83 LPM)
- Counting Efficiency:** 50% @ 0.3 µm; 100% for Particles >0.45 µm (per ISO 21501-4)
- Laser Source:** Extreme Life Laser Diode with >20 Years MTTF
- Zero Count Level:** <1 Count / 5 minutes (per ISO 21501-4)
- Concentration Limits:** 8,000,000 Particles / ft<sup>3</sup> @ 10% Coincidence Loss
- Calibration:** Meets ISO 21501-4 Calibration using NIST Traceable PSL Spheres, DMA and Condensation Particle Counter
- Count Modes:** Automatic, Manual, Beep, Concentration, Cumulative/Differential, Mass Concentration
- Data Storage (on-board):** 3,000 Sample Records, Rotating Buffer (includes particle and environmental data, plus alphanumeric location and time)
- Communication Modes:** RS232 converted to USB (via included RJ-45 to USB cable) for PCs or Printers. RS232 to AdvancedSense, WolfPack or tablet/PC w/GWSS cable/software.
- Touch Screen Display:** 3.5" (8.89cm, Color TFT)
- Alarms:** Internal Alarm Buzzer. Alarms on Counts, Low Battery, Sensor Failure
- Sample Inlet:** Isokinetic Sampling Probe
- Sample Output:** Internally Filtered to HEPA Standards (>99.97% @ 0.3µm)
- Vacuum Source:** Internal Pump, Automatic Flow Control
- Enclosure:** High Impact Injection Molded Plastic (with handle)
- Power:** External 100-240V, 50-60Hz Power Supply (12VDC, 1.25A)
- Battery:** Li-Ion, Removable & Rechargeable
- Dimensions:** 8.75" x 5.0" x 2.5" (22.23 x 12.7 x 6.35 cm)
- Weight:** 2.2lb (1kg)
- Languages:** English (U.S.), Deutsch, Espanol, Italiano, Français, Russian, Japanese, Korean and Chinese.

### Environmental Conditions:

- Operating:** 50°F to 104°F (10°C to 40°C) / 20% RH to 95% RH non-condensing
- Storage:** 14°F to 122°F (-10°C to 50°C) / Up to 98% RH non-condensing

### Accessories Included:

- Operating manual on thumb drive, Removable battery, Isokinetic Sample Probe (direct mount), Purge (zeroing) Filter, 100/240V AC charger/adaptor, Belt Clip, WolfSense PC Data Analysis Software.

### Options:

- PC-GW6AAS-KIT** also includes hardshell carrying case, interface cable for interface to AdvancedSense (specify **PC-GW6AWP-KIT** for WolfPack).
- PC-GW6ADSL-KIT** also includes hardshell carrying case, mobile PC interface cable, and WolfSense LAP Software for interface to Tablet/Laptop/Desktop PCs
- PC-GW6-RHCF** Temperature/Relative Humidity Probe  
32-122°F (0-50°C), +/- 1°F (0.5°C), 15-90% +/- 5% RH
- WolfSense ARG** Advanced, Automated Reporting Software
- PCC-GW6** Hardshell case. Dimensions: 38.1cm x 33.0cm x 17.8cm (15" x 13" x 7")
- PCC-36P** Hard-shell Security case with foam cutouts for AdvancedSense meter, sensor exposure for DSII probe plus space & inlet exposure for internal PC-3016
- AD-L71M-PC3016** Cable for interfacing PC-3016A to AdvancedSense Meter
- AD-L6P-PC3016** Cable for for interfacing PC-3016A to WolfPack (includes power socket for powering PC-3016A from the WolfPack)
- WS-LAP** WolfSense application for WIN 7/8/10 PC interface

GrayWolf Sensing Solutions reserves the right to change specifications without notice.



**GRAYWOLF**  
**SENSING SOLUTIONS**  
6 Research Drive (Worldwide Headquarters)  
Shelton, CT 06484 USA



Email: [info@xearpro.com](mailto:info@xearpro.com)

[www.xearpro.com](http://www.xearpro.com)

☑ Measure Smart

☑ Report Efficiently



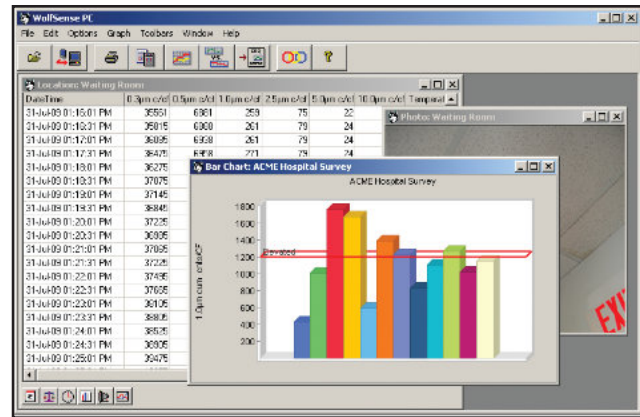
Optional PC-GW6-RHCF %RH, °F/°C probe (removable)



PCC-GW6 Hard-Shell Case

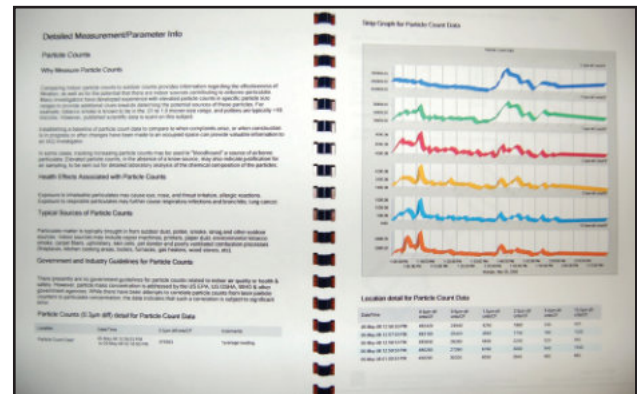


Example ▲ AdvancedSense Screen (interface enables GrayWolf's powerful in-situ features for particulate data, optional remote WiFi access and more)



Example WolfSense PC Screen data transfer & analysis software (supplied as standard)

Example WolfSense ARG report (optional automated report generation software)



Rivenditore:

**XEARPRO**  
Via delle Primule, 16, Cogliate (MB)  
20815, Italia  
Tel. (+39) 02 9646.0317