

Advanced Environmental Instrumentation

Harnessing the Power of Mobile Computing



✓ Surveyed

✓ Documented

✓ Reported



Features:

- View / Log 6 Particle Sizes Simultaneously
- Display $\mu\text{g}/\text{m}^3$ in Mass Concentration Mode as PM0.5, PM1.0, PM2.5, PM5.0, PM10, and TPM
- Display 0.3 to 0.5 μm , 0.5 to 1.0 μm , 1.0 to 2.5 μm , 2.5 to 5.0 μm , 5.0 to 10.0 μm , 10.0 to 25 μm counts
- View / Log as differential or cumulative
- Precision Pump (internal) for highly accurate 0.1 CFM (2.83 LPM) Flow Rate
- Rapid Counts for tracking particle sources
- Removable / Rechargeable Li-Ion battery
- Optional Temp, %RH probe
- Internal Audible Alarm
- Belt clip for walk-thru surveys or attachment to tripod or to GrayWolf cases
- On-board Memory (stores 3,000 samples)
- Use as a stand-alone or interface to GrayWolf's AdvancedSense Meters, WolfSense Mobile enabled Smartphones, or WolfSense LAP enabled Windows devices for enhanced logging and expanded features
- Optional Wi-Fi, GrayWolfLive Cloud logging and remote access
- Supplied with GrayWolf's WolfSense PC Software for data download and analysis
- Proven reliability since 2007
- 2-Year Warranty

Benefits:

- Easy to Use (User-Friendly Interface)
- Expands your GrayWolf parameters, all simultaneously displayed/logged in one file
- Efficiently Combines Particle Counting and Mass Concentration read-out in one Meter



PC-3016A

6-Channel Particle Meter

Use the PC-3016A as a stand-alone laser particle meter, connect to a mobile device/computer, to a sophisticated AdvancedSense system, or to the cloud for simultaneous interface with GrayWolf's DirectSense probes.

- Ergonomically designed and lightweight, the PC-3016A is tried-and-true, offered by GrayWolf (and improved upon) since 2007.
- Easily download data from the PC-3016A using the included WolfSense PC Software to create high quality trend/bar graphs/tables. Use WolfSense's advanced organizational features, or simply export as .csv files.
- Optionally add Advanced Report Generator software for extremely efficient, automated reporting of particle count/concentration data.
- Offering 6 channels of simultaneous particle counting, the PC-3016A displays both cumulative and differential particle count data on its easy-to-read 3.5" (8.9 cm) color touch screen.
- Display/Log readings in particle counts and/or calculated mass concentration ($\mu\text{g}/\text{m}^3$), including PM1.0, PM2.5, PM10, TPM and more.
- Monitor particulate levels, even in those "hard-to-reach" areas where two-handed operation is unsafe.



GRAYWOLF[®]
SENSING SOLUTIONS
Ph. 1-203-402-0477

Email:
Salesteam@
GrayWolfSensing.com

Website:
www.GrayWolfSensing.com

PC-3016A

6-channel Particle Meter



Measure Smart

Report Efficiently

SPECIFICATIONS:

- Size Range: 0.3 - 25.0 µm+ (145 µm max into inlet)
- Channel Sizes: 0.3, 0.5, 1.0, 2.5, 5.0, 10.0 µm Optional: inquire about other size cuts (Particle Count only)
- Flow Rate: 0.1 CFM (2.83 LPM)
- Counting Efficiency: 50% @ 0.3 µm; 100% for Particles >0.45 µm (per ISO 21501-4)
- Laser Source: Extreme Life Laser Diode with >20 Years MTTF
- Zero Count Level: <1 Count / 5 minutes (per JIS B 9921 spec and ISO 21501-4 annex C)
- Concentration Limits: 8,000,000 Particles / ft³ @ 10% Coincidence Loss Suitable
- Calibration: Meets ISO 21501-4 Calibration and accredited ISO 17025 using NIST Traceable PSL Spheres, DMA and Condensation Particle Counter
- Count Modes: Automatic, Manual, Beep, Mass Concentration, Cumulative/Differential
- Data Storage (on-board): 3,000 Sample Records, Rotating Buffer (includes particle and environmental data, plus alphanumeric location and time). Connect to GrayWolf device for far greater memory.
- Communication Modes: RS232 converted to USB (via included RJ-45 to USB cable) for PCs or Printers. RS232 to AdvancedSense, or tablet/PC w/GrayWolf cable/software.
- Touch Screen Display: 3.5" (8.89cm, Color TFT)
- Alarms: Internal, Adjustable Alarm on Counts, Low Battery, Sensor Failure
- Sample Inlet: Isokinetic Sampling Probe
- Sample Outlet: Internally Filtered to HEPA Standards (>99.97% @ 0.3µm)
- Vacuum Source: Internal Pump, Automatic Flow Control
- Enclosure: High Impact Injection Molded Plastic (with handle)
- Power: External 100-240V, 50-60Hz Power Supply (12VDC, 1.25A)
- Battery: Li-Ion, Removable & Rechargeable
- Dimensions: 8.75"(l) x 5.0"(w) x 2.8"(h), 4.4"(h) w/handle (22.2 x 12.7 x 7.1 cm, 11.2 cm w/handle)
- Weight: 2.2lb (1kg)
- Languages: English (U.S.), Deutsch, Espanol, Italiano, Français, Russian (plus Japanese, Korean or Chinese upon request)
- Warranty: 2 years on instrument, 1 year on accessories

Environmental Conditions:

Operating: 50°F to 104°F (10°C to 40°C) / 20% RH to 95% RH non-condensing
 Storage: 14°F to 122°F (-10°C to 50°C) / Up to 98% RH non-condensing

Accessories Included:

Isokinetic Sample Probe (direct mount), Purge (zeroing) Filter, Removable Li-Ion Battery, 100/240V AC charger/adaptor, Belt Clip, GrayWolf's WolfSense PC Data Download and Reporting Software, Operating manual on thumb drive.

OPTIONS:

- PC-GW6ADSL-KIT also includes PCC-GW6 hardshell carrying case and mobile PC interface cable, for connection to Tablet/Laptop/Desktop PCs to utilize WolfSense PC or optional WolfSense LAP
- PC-GW6-RHCF Temp, %RH Probe 0-150°F (-17.8 - 65.6°C), +/- 1.8°F (1.0°C), 0-100% (non-condensing), +/- 5% RH
- WOLFRADIO-XM-3016 Bluetooth LE and Wi-Fi module 4.25"(l) x 1.5"(w) x 1"(h), (10.8 x 3.7 x 2.5 cm)
- GRAYWOLFIVE Cloud Data Access/Logging Software
- WS-ARG-ST WolfSense ARG Advanced, Automated Reporting Software
- PCC-GW6 Hardshell case. Dimensions: 15" x 13" x 7" (38.1cm x 33.0cm x 17.8cm)
- PCC-36P Hard-shell Security case with foam cutouts for AdvancedSense meter, sensor exposure for DSII probe plus space & inlet exposure for internal PC-3016
- AD-L71M-PC3016 Cable for interfacing PC-3016A to AdvancedSense Meter
- WS-LAP WolfSense app for WIN 8/10/11 tablet/laptop/PC interface



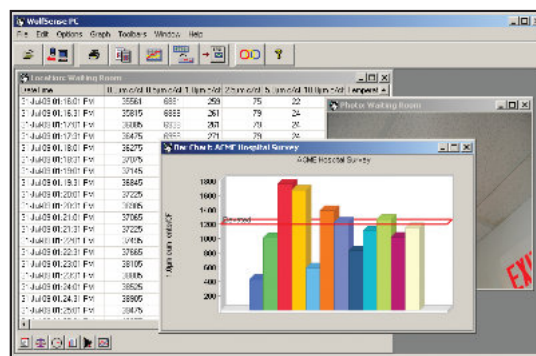
Optional PC-GW6-RHCF %RH, °F/°C probe (for PC-3016A, removable)



Example ▲ AdvancedSense XM Screen (connect to PC-3016A via cable or Bluetooth, shown with additional DSII probe readings)

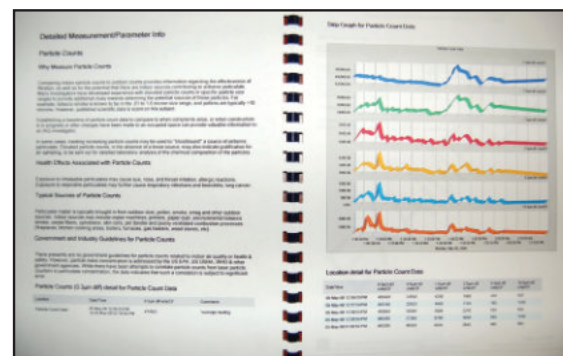


Optional WOLFRADIO-XM-3016 wireless module adds Bluetooth and Wi-Fi (for WolfOS, Android, iOS, and cloud connectivity)



Example WolfSense PC Screen data transfer & analysis software (supplied as standard)

Example WolfSense ARG report (optional automated report generation software)



GrayWolf Sensing Solutions reserves the right to changes specifications without notice.



GRAYWOLF[®] SENSING SOLUTIONS

6 Research Drive (Worldwide Headquarters)
 Shelton, CT 06484 USA
 Ph. (1) 203-402-0477
 800-218-7997



Email: info@xearpro.com

xearpro.it

Rivenditore:

XEARPRO

Via delle Primule, 16, Cogliate (MB)
 20815, Italia
 Tel. (+39) 02 9646.0317