

Advanced Environmental Instrumentation

Harnessing the Power of Mobile Computing

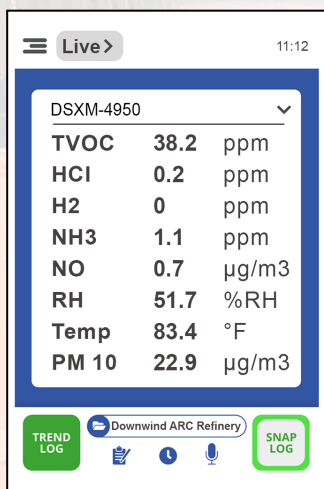


✓ Surveyed

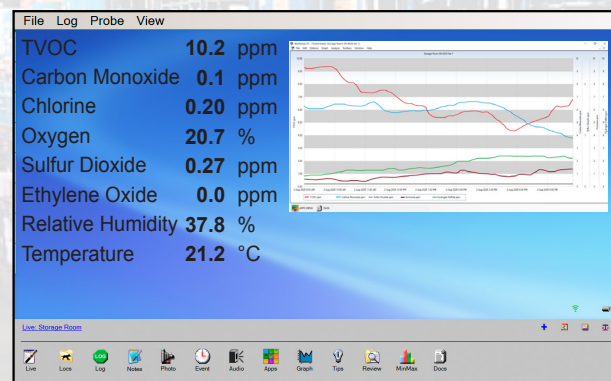
✓ Documented

✓ Reported

Realtime (WolfOS)

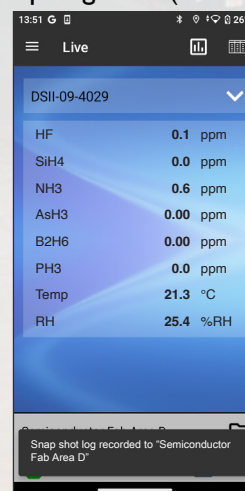


Realtime & Logged Data (Windows)

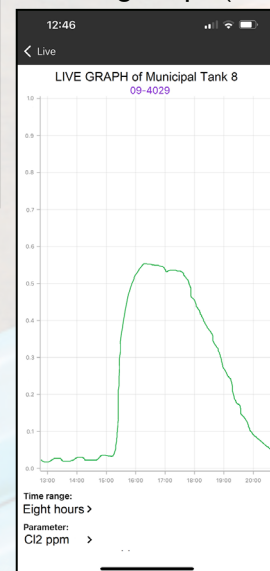


Example Screens

Snap Log Data (Android)

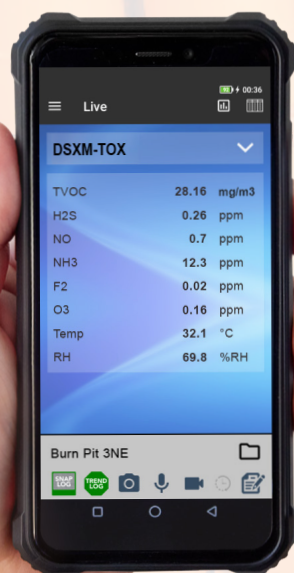


Trend Log Graph (iOS)



DIRECTSENSE® TOX

Toxic Gas Test Meters with Probes/Monitors



GrayWolf is transforming how to Measure, Datalog and Document worker exposure levels, IAQ, and many other environmental parameters. The DirectSense XM probes, connecting to your choice of platforms and 25+ smart sensors, are powerful data collection tools; intuitive and Easy-To-Use.

- Choose from SO₂, NO₂, NO, CO, H₂S, HCN, EtO, Cl₂, O₂, O₃, NH₃, HCl, H₂, SiH₄, AsH₃, PH₃, PID (TVOCs) ...and more
- Up to 6 gas sensors (plus TRH) per probe
- Connect multiple probes simultaneously
- "Snap-Shot" instantaneous data capture and long-term data trending (months of data on-board the probes, and far more connecting via cable, Bluetooth, or Wi-Fi to other platforms)
- Remotely access readings, log to the cloud via secure Azure servers with optional GrayWolfLive® software
- Password protect access or other high-security options available
- When connected to various platforms, efficiently stores measured data along with calibration history, associated photos, videos, text notes, event notes, audio notes... and more



GRAYWOLF®
SENSING SOLUTIONS
PH. 1-203-402-0477

EMAIL:
SALESTEAM@
GRAYWOLFSENSING.COM

WEBSITE:
GRAYWOLFSENSING.COM

DIRECTSENSE[®] TOX



✓ Measure Smart

✓ Report Efficiently

Toxic Gas Test Meters with Probes/Monitors

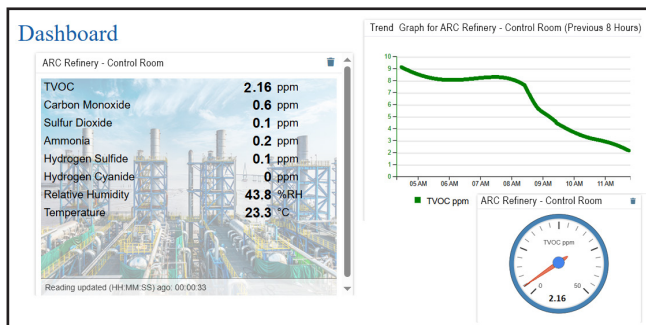
DSXM PROBES

- Easy to calibrate all parameters
- Calibration history stored on smart sensor
- Select up to 6 gas sensors in one probe (plus %RH and °F/°C)
- Up to 4 probes per connected platform
- Unlimited probes, simultaneously, to the cloud (GrayWolfLive or JSON)

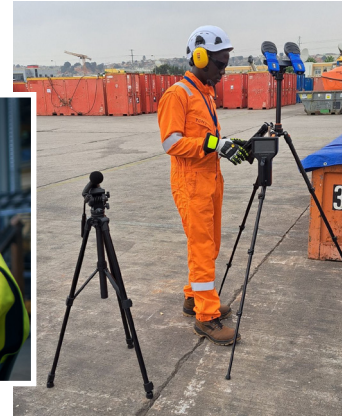


DirectSense XM probes come with bench-top stand/wall-mount charging cradle

Example Realtime & Trendlog Screens



GrayWolfLive Cloud Software



Toxic exposure and/or IAQ applications with the appropriate sensors.

Sensors are true plug-and-play, and may be swapped on-site.

- Sulfur Dioxide (SO₂)
- Nitrogen Dioxide (NO₂)
- Nitric Oxide (NO)
- Carbon Monoxide (CO)
- Hydrogen Sulfide (H₂S)
- Hydrogen Cyanide (HCN)
- Hydrogen Chloride (HCl)
- Hydrogen Fluoride (HF)
- Ethylene Oxide (C₂H₄O)
- Chlorine Dioxide (ClO₂)
- Carbon Dioxide (CO₂)
- Diborane (B₂H₆)
- Ozone (O₃)
- Oxygen (O₂)
- Ammonia (NH₃)
- Chlorine (Cl₂)
- Hydrogen (H₂)
- Fluorine (F₂)
- Formaldehyde (HCHO)
- Phosphine (PH₃)
- Arsine (AsH₃)
- Silane (SiH₄)
- Phosgene (COCl₂)
- PID (TVOCs)

Connect DSXM probes to a choice of platforms: Rugged, purpose-built WolfOS[™] meters (AdvancedSense[®]/WolfPack[®] XM), Android/iOS/MacOS/Windows devices (via Bluetooth or cable), and/or GrayWolfLive via Wi-Fi to the Cloud.



GRAYWOLF[®]
SENSING SOLUTIONS
 6 RESEARCH DRIVE (WORLDWIDE HEADQUARTERS)
 SHELTON, CT 06484 USA
 PH. (1) 203-402-0477
 800-218-7997

XEArPro s.r.l.

Distributore
 esclusivo italiano

• S. legale: Via delle Primule, 16
 Cogliate (MB), 20815, Italia

• S. operativa: Via XXV Aprile, 41
 Barlassina (MB), 20825, Italia

☎ +39 02 9646.0317 ✉ info@xearpro.com



www.xearpro.it

EMAIL: SALESTEAM@GRAYWOLFSENSING.COM

GRAYWOLFSENSING.COM

GRAYWOLF[®]
SENSING SOLUTIONS
 ANNACOTTY INDUSTRIAL PARK, UNIT 1C
 ANNACOTTY, COUNTY LIMERICK
 IRELAND V94 PR2Y
 PH. (353) 61358044