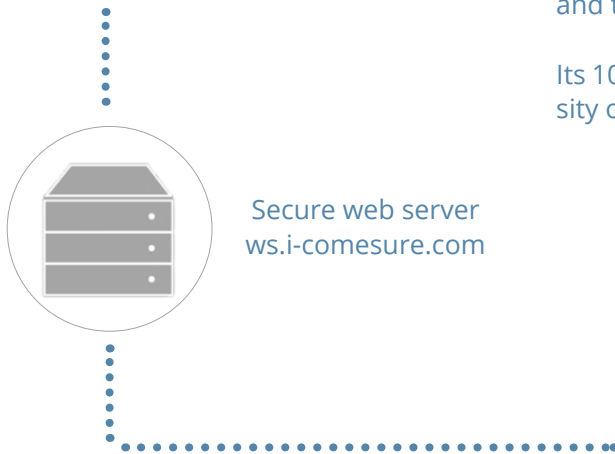


# ECOMTREK

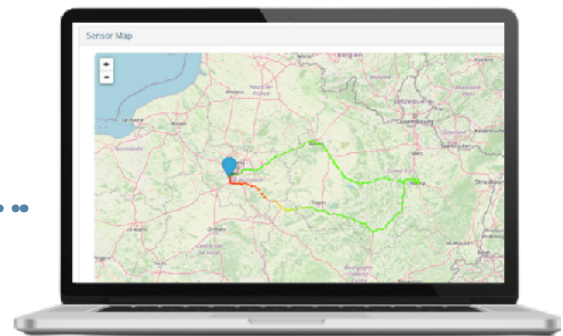
## MOBILE AIR QUALITY MONITOR



Real-time data transfer by 4G, LTE-M



Secure web server  
ws.i-comesure.com



SaaS platform for data visualization  
and processing



Installed on the roof of all types of vehicles, EcomTrek measures concentrations of air pollutants — including  $\text{NO}_2$ ,  $\text{PM}_{10}$ ,  $\text{PM}_{2.5}$ ,  $\text{PM}_{10}$ ,  $\text{O}_3$ ,  $\text{NH}_3$ , VOC, CO, NO,  $\text{SO}_2$ ,  $\text{H}_2\text{S}$  — as well as temperature, pressure and humidity.

It accurately maps air quality in order to gauge people's exposure to pollution in urban areas.

Equipped with a three-axis accelerometer and a GPS receiver, EcomTrek allows you to track a vehicle's movements and to obtain hyperlocalized measurements all the way.

Its 10-second sampling rate enables it to increase the density of measured data to keep up with driving conditions.

### + ADVANTAGES

- + Accurate and hyper-localized measurements
- + Real-time pollution mapping
- + Remote recalibration with reference monitors
- + Easy to install device
- + Affordable solution

### + APPLICATIONS

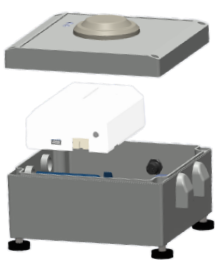
- + Urban traffic
- + Smart cities
- + Monitoring networks
- + Service for local and regional governments
- + Service for users

# ECOMTREK

## ECOMTREK TECHNICAL SPECIFICATIONS



Select the sensors of your choice:  
up to 3 electrochemical,  
1 PID, 1 NDIR and 1 optical sensors



Optimized maintenance and  
calibration: one-step enclosure  
replacement



|                       |  |
|-----------------------|--|
| Dimensions / Weight   | H3.7" x W6.8" x L7.2" (H96 x W175 x L184 mm) / 2.07 lbs (0.94 kg)  |
| Processor             | 32 bits Dual Core<br>One measurement every 10 seconds (adjustable from 10s to 1h)  |
| Connectivity          | 4G - LTE-M   |
| Localization          | Accelerometer, GPS   |
| Access to data        | <a href="https://ws.i-comesure.com">https://ws.i-comesure.com</a>  |
| Web services          | Mapping   Multi-mode data display   Device status   Device remote control   Data storage   Data downloading   Configurable alerts/alarms   Data analytics reports   Virtual Integrated Devices (VID)   Data encryption   API   Database export   Data logger |
| Data security         | Local + Cloud-based encryption<br>WPA2-Enterprise compatible   |
| Data storage          | Built-in microSD memory card<br>Web storage  |
| Pollution index       | Multicolor led   |
| Power supply          | 12 VDC 1A from automobile cigarette lighter<br>Power adapter included (100-240 VAC 50/60Hz)<br>Integrated back-up battery (> 4h of use).   |
| Fastening accessories | Magnetic fixing kit<br>Mounting feet<br>Safety flange  |
| Certifications        | CE class B, FCC class A  |

| Sensors  | Technology         | Measurement Range            | Detection Limit     |
|--|--------------------|------------------------------|---------------------|
| NO <sub>2</sub>                                      | Electrochemical    | 0-20 ppm                     | < 0.02 ppm          |
| O <sub>3</sub>                                       |                    | 0-20 ppm                     | < 0.02 ppm          |
| CO   |                    | 0-500 ppm                    | < 0.02 ppm          |
| NO   |                    | 0-20 ppm                     | < 0.08 ppm          |
| SO <sub>2</sub>                                      |                    | 0-50 ppm                     | < 0.02 ppm          |
| H <sub>2</sub> S                                     |                    | 0-50 ppm                     | < 0.01 ppm          |
| NH <sub>3</sub>                                      |                    | 0-100 ppm                    | < 3 ppm             |
| HCHO   |                    | 0-10 ppm                     | < 0.1 ppm           |
| Cl <sub>2</sub>                                      |                    | 0-20 ppm                     | < 0.2 ppm           |
| HCl  |                    | 0-20 ppm                     | < 0.5 ppm           |
| VOC <sub>50</sub> and VOC <sub>3000</sub>            | PID                | 0-50 ppm   0-3000 ppm        | 1 ppb   50 ppb      |
| CH <sub>4</sub>                                      | NDIR               | 0-2.5%                       | 500ppm              |
| CO <sub>2</sub>                                      |                    | 0-5000 ppm                   | 1 ppm               |
| PM <sub>1</sub> ,PM <sub>2.5</sub> ,PM <sub>10</sub> | Laser/Optical      | 0-1000 µg/m <sup>3</sup>     | 1 µg/m <sup>3</sup> |
| Environmental parameters                             | Technology         | Measurement Range            | Accuracy            |
| Temperature  | Temperature sensor | 14 to 140 °F (-10 to +60 °C) | 0.9 °F (0.5 °C)     |
| Humidity   | RH sensor          | 0 to 100% RH                 | 3% RH               |
| Pressure   | Pressure sensor    | 300 to 1100 hPa              | 0.12 hPa            |
| Noise  | MEMS Microphone    | 10 - 80 dB SPL               | 1 dB                |

**XEarPro s.r.l.** Distributore esclusivo italiano

S. legale: Via delle Primule, 16  
Cogliate (MB), 20815, Italia

S. operativa: Via XXV Aprile, 41  
Barlassina (MB), 20825, Italia

+39 02 9646.0317 | info@xearpro.com | www.xearpro.it