

# ECOMZEN 2

## NEW-GENERATION INDOOR AIR QUALITY MONITOR



More powerful, compact and equipped than the previous generation of monitors, EcomZen 2 continuously measures up to 11 parameters including indoor air quality and environmental parameters (temperature, pressure, relative humidity, noise and brightness) with professional grade accuracy.

In addition to boasting a metrological precision ideal for sensitive environments, EcomZen 2 meets regulations and health codes for public places as well as HQE, WELL and BREEAM sustainable building certification requirements.

An all-in-one solution, EcomZen 2 features state-of-the-art technologies. Its dual-core microprocessor and Bluetooth Low Energy (BLE) mode doubles its executing power yet keeps it ultra-connected and energy efficient.

Its new built-in wall mounting system makes it a breeze to install. It can also be recessed or placed on a flat surface to blend seamlessly with any interior.

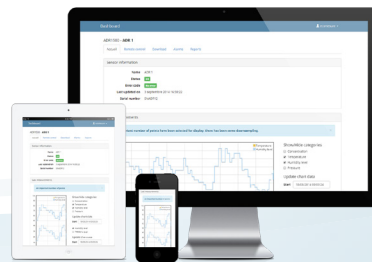


A multicolor LED lets you know in real time the air quality index

Secure web server  
[ws.i-comesure.com](https://ws.i-comesure.com)



Web platform <https://ws.i-comesure.com> for data management and visualization



### + BENEFITS

- + Powerful, compact and affordable
- + Easy to install and use
- + Built-in multi-parameter system
- + Calibration process giving accurate measurement
- + Optimized maintenance - recycling program

### + APPLICATIONS

- + Day-care centers, educational institutions
- + Smart buildings, offices
- + Hospitals
- + Train and airport concourses
- + Malls, hotels, performing arts venues

# ECOMZEN 2

## TECHNICAL SPECIFICATIONS



|                 |  |
|-----------------|--|
| Dimensions      | H5.5" x W3.3" x L1.9" (H140 x W85 x L50 mm)<br>0.57 lbs (0.26 kg)  |
| Processor       | 32 bits Dual Core<br>One measurement every 60 seconds (adjustable from 10s to 1h)  |
| Connectivity    | Ethernet, 2.4 GHz Wi-Fi<br>Options: 5 GHz Wi-Fi, LoRa, 3G/4G, LTE-M, NB-IoT  |
| Set-up          | BLE settings app for iOS & Android<br>Remote firmware updates via OTA (Over The Air)   |
| Access to data  | <a href="https://ws.i-comesure.com">https://ws.i-comesure.com</a>  |
| Web services    | Mapping   Multi-mode data display   Device status   Device remote control   Data storage   Data downloading   Configurable alerts/alarms   Data analytics reports   Virtual Integrated Devices (VID)   Data encryption   API   Database export   Data logger |
| Data security   | Local + Cloud-based encryption<br>WPA2-Enterprise compatible   |
| Pollution index | Multicolor led   |
| Data storage    | Built-in microSD memory card<br>Web storage  |
| Power supply    | 5 VDC USB-C, 2A max. Power adapter included (90-264 VAC 50/60Hz)<br>Integrated back-up battery (> 4h of use). Option: PoE  |
| Certifications  | CE class B, FCC class A  |

## MEASUREMENT SPECIFICATIONS

Select the sensors of your choice:  
up to 3 electrochemical,  
1 PID, 1 NDIR and 1 optical sensors



Optimized maintenance and calibration:  
one-step enclosure replacement



| Sensors*   | Technology         | Measurement Range            | Detection Limit     |
|--|--------------------|------------------------------|---------------------|
| NO <sub>2</sub>  | Electrochemical    | 0-20 ppm                     | < 0.02 ppm          |
| O <sub>3</sub>   |                    | 0-20 ppm                     | < 0.02 ppm          |
| CO   |                    | 0-500 ppm                    | < 0.02 ppm          |
| NO   |                    | 0-20 ppm                     | < 0.08 ppm          |
| SO <sub>2</sub>  |                    | 0-50 ppm                     | < 0.02 ppm          |
| H <sub>2</sub> S   |                    | 0-50 ppm                     | < 0.01 ppm          |
| NH <sub>3</sub>  |                    | 0-100 ppm                    | < 3 ppm             |
| HCHO   |                    | 0-10 ppm                     | < 0.1 ppm           |
| Cl <sub>2</sub>  |                    | 0-20 ppm                     | < 0.2 ppm           |
| HCl  |                    | 0-20 ppm                     | < 0.5 ppm           |
| VOC <sub>50</sub> and VOC <sub>3000</sub>                                | PID                | 0-50 ppm   0-3000 ppm        | 1 ppb   50 ppb      |
| CH <sub>4</sub>  | NDIR               | 0-2.5%                       | 500ppm              |
|  |                    | 0-5000 ppm                   | 1 ppm               |
| PM <sub>1</sub> , PM <sub>2.5</sub> , PM <sub>4</sub> , PM <sub>10</sub> | Laser/Optical      | 0-1000 µg/m <sup>3</sup>     | 1 µg/m <sup>3</sup> |
| <b>Environmental parameters</b>  | <b>Technology</b>  | <b>Measurement Range</b>     | <b>Accuracy</b>     |
| Ambient light  | Photodiode         | 0-120 000 Lx                 | 10%                 |
| Noise  | MEMS Microphone    | 10 - 80 dB SPL               | 1 dB                |
| Temperature  | Temperature sensor | 14 to 140 °F (-10 to +60 °C) | 0.9° F (0.5 °C)     |
| Humidity   | RH sensor          | 0 to 100% HR                 | 3% HR               |
| Pressure   | Pressure sensor    | 300 to 1100 hPa              | 0.12 hPa            |

**XEarPro s.r.l.** Distributore esclusivo italiano

S. legale: Via delle Primule, 16  
Cogliate (MB), 20815, Italia

S. operativa: Via XXV Aprile, 41  
Bariassina (MB), 20825, Italia

+39 02 9646.0317 | [info@xearpro.com](mailto:info@xearpro.com) | [www.xearpro.it](http://www.xearpro.it)

MADE IN FRANCE

\*Specifications of sensors before integration. Performance may differ after integration. VEN - 2024-04-17